



NEW HOLLAND

D180C



MAXIMUM POWER	232 hp
MAXIMUM OPERATING WEIGHT	22.760 kg
BLADE TYPE	PAT / BULLDOZER
UNDERCARRIAGE	XLT (610 mm track)

A Brand of CNH Industrial



D180C

FIRST TRACK TRACTOR OVER
20 TONS, WITH HYDROSTATIC
TRANSMISSION TECHNOLOGY,
MANUFACTURED IN BRAZIL


TWO BLADE OPTIONS
(PAT/ BULLDOZER).

PAT BLADE WITH "SHAKE"
FUNCTION FOR.

HYDROSTATIC
TRANSMISSION THAT
PROVIDES BETTER
TRACTION, AGILITY, AND
INDEPENDENT SWING OF
THE TRACKS.

STANDARD REVERSIBLE
FAN WITH MANUAL AND
AUTOMATIC DRIVE.





SPACIOUS AND COMFORTABLE CABIN WITH ROPS/FOPS PROTECTION, A/C SYSTEM AND LOW LEVEL OF INTERNAL SOUND.

EASY MAINTENANCE THROUGH SIDE AND BOTTOM COVERS, EJECTABLE SEAT, ECOLOGICAL DRAIN AND CENTRALIZED PRESSURE OUTLETS.

VARIABLE FLOW HYDRAULIC SYSTEM PUMP, RESULTING IN LOWER TEMPERATURE, LESS NOISE AND LOWER FUEL CONSUMPTION.

D180C

NEW HOLLAND PRODUCTIVITY

THE INDUSTRIAL ENGINE LEADER

- New Holland Electronic Engine by FPT MAR-I/Tier 3 with *intercooler* and EGR system (internal).
- High reliability engine, great power, and low fuel consumption.
- Our engines are used not only in earthmoving equipment, but also in trucks, agricultural and marine equipment, and military applications.
- These mass production volumes and our substantial investments will allow us to offer the best and only proven technology that will reduce operating costs.
- Our engines are approved to run on a 20% biofuel blend, further reducing environmental impacts.



SIMPLY MORE POWER AND LESS CONSUMPTION

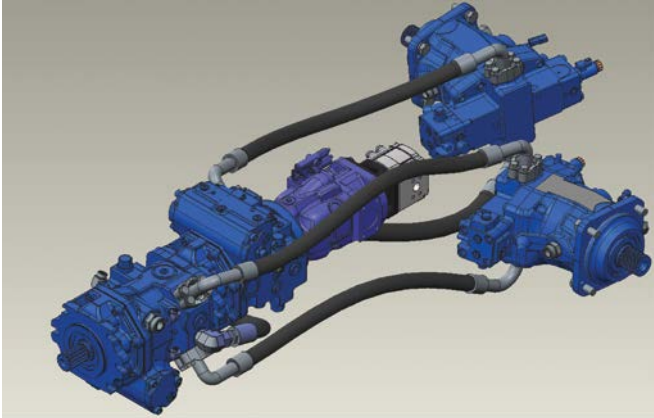
- New Holland Electronic Engine by FPT Tier 3 with *intercooler* and EGR system (internal).
- High reliability engine, great power, and low fuel consumption.
- Tractor travel speed can be adjusted in three different ways: using the rotation variation lever, through the two buttons on the displacement *joystick*, or by pushing the *joystick* forward/backward according to the desired demand.
- Single pedal with two functions (brake or decelerator) that acts on the engine speed or pump flow, in order to guarantee greater precision or better braking efficiency.





D180C

HYDROSTATIC TRANSMISSION (HIGH TRACTION TECHNOLOGY)



The hydrostatic transmission system always ensures the supply of adequate energy to the torque required for the work, avoiding slipping. The tractor can easily make curves with traction on both tracks or even perform swings around its central axis, without leaving the place (counter-rotation). Because it has fewer components than a standard solution, maintenance is faster, easier, and cheaper.



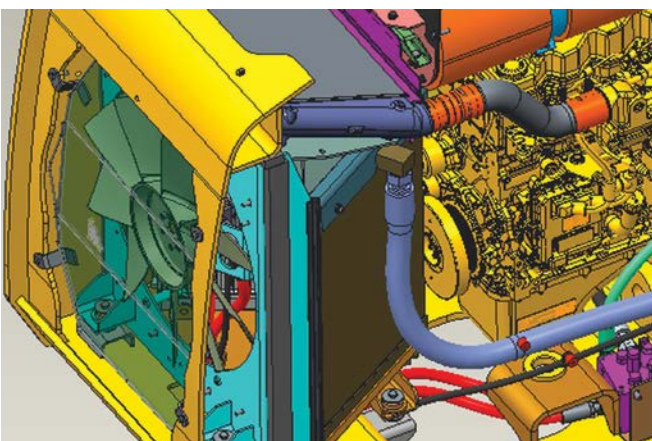
JOYSTICK WITH PROPORTIONAL CONTROL

The unique *Proportional Dozer Control* (PDC) function provides best-in-class speed control. After establishing the desired speed range (graded from 0 to 15), the operator can modulate the tractor's movements simply by moving the joystick forwards or backwards. PDC ensures smooth movements for better leveling work and more comfortable operation. The operator can also choose from three steering and reverse reaction speeds for increased productivity and comfort.



TRIPLE FINAL REDUCTION

The triple final reduction adds a planetary reduction to the existing double standard. With this solution, the hydrostatic transmission can work at a higher rotation, reducing the overall pressure and therefore the stress on the individual components. The two final reductions are directly attached to the main chassis for better distribution of effort and easy disassembly in case of extraordinary maintenance.



REVERSIBLE FAN

The D180C is equipped with the new reversible fan system as standard. This system allows the rotation direction of the blower's propeller to be reversed in order to clean the three radiators in the cooling system (engine, hydraulic, and *intercooler*). This function can be activated manually through a button on the front console or simply set it to AUTO on the panel, so that the reversal occurs automatically at time intervals.



MONOBLOCK MAIN CHASSIS

All of the tractor's vital components, such as the engine and transmission, are mounted and integrated within the new chassis. All typical tractor stresses are evenly distributed, reducing component wear, and ensuring years of excellent performance. Modular assembly results in faster service and inspections.

D180C

COMFORTABLE CABIN

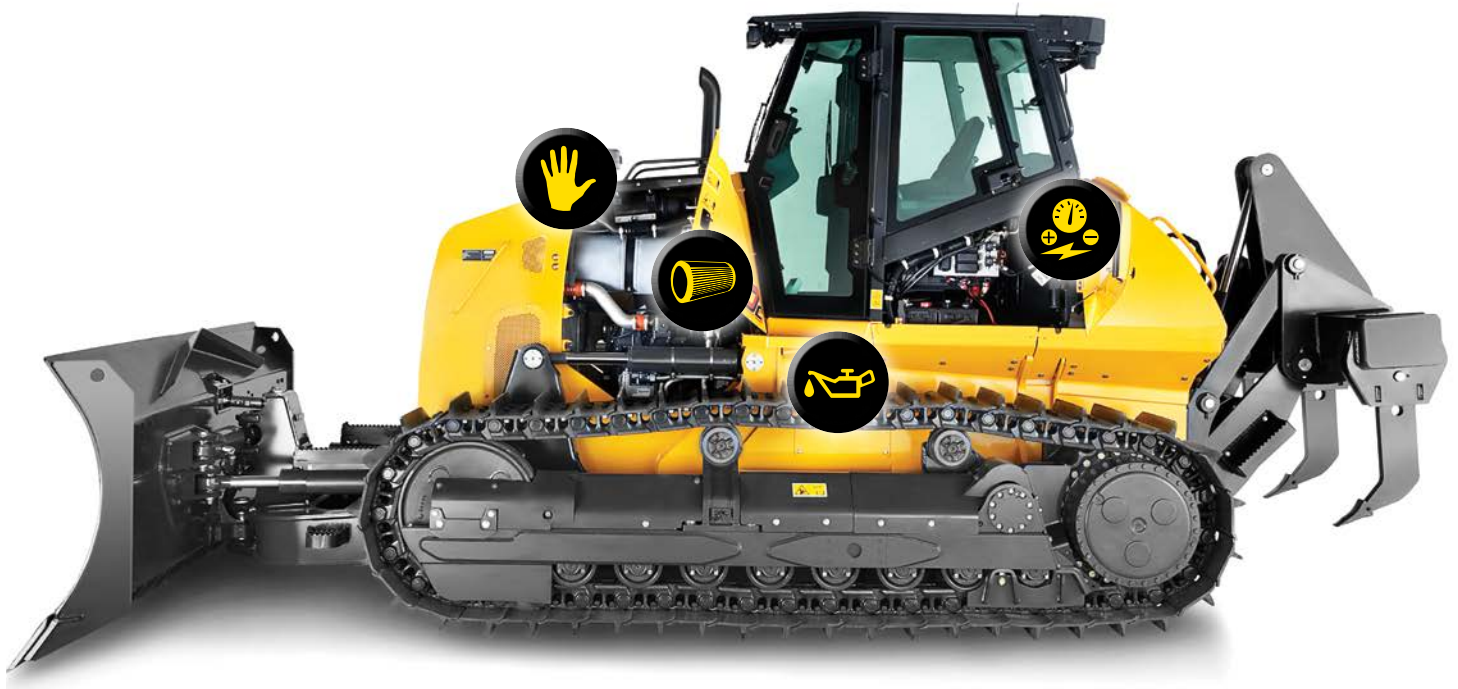


CONTROLS AT YOUR FINGERTIPS

You'll enjoy the comfort of the high-vibration-absorbing seat, allowing you to concentrate fully on your work and operate the D180C comfortably with the two *joysticks*. The dashboard is ergonomically positioned in front of you. Hydrostatic and hydraulic functions are activated simply with two buttons, and there are no levers you have to engage. The powerful air-conditioning system, placed at the rear of the cabin in a dust-free location, maintains an ideal interior climate at all times through various ventilation openings.

BEST IN CLASS BLADE CONTROL

The blade and *ripper* functions are located on the right side console. The *ripper* can be easily controlled with the new *joystick*. The redesigned blade control offers new features that improve operator comfort and productivity: leveling function instantly reduces oil flow by 50% for precise blade movement; the automatic vibration feature shakes off sticky materials from the blade. The four top speed modes, three steering severity modes, three reversing reaction modes and three blade sensitivity modes can be configured via the on-board computer for better control, agility, finishing or productivity. The new C Series can also be ordered with the automatic blade control systems (Machine Control) and the FleetForce telemetry system, which are pre-set from the factory. You can choose the blade configuration you need: PAT or Bulldozer (Semi-U), which will surely meet all your demands.



EASY MAINTENANCE

Maintenance of the engine compartment, electrical system and hydraulic system can be done easily and quickly through side doors and covers. Furthermore, the hydrostatic and hydraulic system can be accessed through lower, rear covers and also through the new ejection seat system. The D180C also features an eco-drain for easy removal of major fluids: engine oil, engine coolant, fuel tank and hydraulic tank.

LESS MAINTENANCE

For the fastest return on investment, all major maintenance intervals have been extended, resulting in increased uptime: hydraulic/hydrostatic system oil and filters: 2000 hours – Engine oil filter: 500 hours – Engine coolant: 2000 hours.



Filters, hydraulic oil level, pressure checks and main control valve can be easily reached from the ground on the right side of the machine.



All electrical components are grouped on the left side: batteries, fuse box and ignition switch are easy to access. The four side doors are thick and can be locked with the ignition switch.



Major lubrication points are conveniently grouped on both sides of the chassis, so the operator wastes no time in lubricating.



The air and oil filter check and refueling points are grouped on the right side behind the front side cover. The wide 90-degree opening provides plenty of room for the technician to work on the engine.

D180C

SPECIFICATIONS



ENGINE

Model.....	NH/FPT NEF 6 MAR1/TIER 3 173kW
Cylinders.....	6
Cylinder capacity.....	6.7 L
Fuel injection.....	Direct <i>Common Rail</i>
Spin-on fuel.....	Filter with inline sieve
Air intake.....	<i>Cross-flow</i> (air intake)
Coolant.....	Liquid
Engine rotations.....	rpm
Idling, no load.....	800 +/- 25 rpm
Maximum, no load.....	2335 +/- 25 rpm
Power SAE J1349:	
Net.....	214 hp (160 kW) @ 2200 rpm
Gross.....	232 hp (173 kW) @ 2200 rpm

Engine lubrication

Pump.....Submerged plate cooler pump w/ nozzles
pressurized under the piston

Variation of pump operating angles:

Side by side.....	35°
Front and rear.....	45°

Radiator:

Radiator core area.....	0.61 m ²
Rows of tubes.....	4

Fan

Diameter.....	700 mm
Activation.....	Hydraulic



TRANSMISSION

Automatic two-way hydrostatic

Pump.....	Variable axial piston
Motor.....	Variable curved axial piston
Max. drawbar force*.....	365 kN
Transmission.....	Electronic Control through a single lever
Oil filter.....	2 micron, rotary, replaceable

Displacement speeds*

Forward.....	0 – 9.3 km/h
Ré.....	0 – 9.3 km/h
Parking brakes.....	High-strength, spring-applied and hydraulically released

Steering brakes.....Hydrostatic

Final reducer.....	2 reductions with helical gears
Ratio.....	48.75:1

Transmission cooling

Type.....	Oil-Air
Radiator core area.....	0.31 m ²



ELECTRICAL SYSTEM

Alternator.....	120 A
Batteries (2).....	12 volt, low maintenance 1200 A for cold start @ -18 °C



CABIN AND CONTROLS

ROPS/FOPS Cabin; seat with pneumatic suspension and lumbar adjustment; seat belt; adjustable armrests; footrests; tool storage area; top lining; mat; seat tilt platform; noise level 78 dbA.

Warning lights:

Air filter; alternator; fault diagnosis indicator; engine cooling temperature; engine oil pressure; hydraulic filter; low fuel level; parking brake applied; upcoming maintenance indicator; transmission filter; transmission load pressure.

Gauges:

Battery voltage; hour meter/tachometer/diagnostics/maintenance indicator; fuel level; transmission oil temperature; transmission speed indicator; water temperature.

Sound alarms:

Engine coolant temperature; engine oil pressure; low fuel level; transmission load pressure; transmission/hydraulic temperature.



HYDRAULIC SYSTEM

Pump flow @ 2200 rpm.....	187 L/min
Max pressure.....	248 bar
PAT lifting cylinder	n° 2
Internal diameter.....	114.3 mm
Rod diameter.....	63.5 mm
Stroke.....	428 mm
PAT angle cylinder	n° 2
Inner diameter.....	114 mm
Rod diameter.....	63.5 mm
Stroke.....	502.7 mm
PAT Tilt Cylinder	n° 1
Inner diameter.....	127 mm
Rod diameter.....	63.5 mm
Stroke.....	148.3 mm

Bulldozer lifting cylinder

Inner diameter.....	82.6 mm
Rod diameter.....	50.8 mm
Stroke.....	1.000 mm

Bulldozer Tilt Cylinder

Internal diameter.....	114.3 mm
Rod diameter.....	36.5 mm
Stroke.....	126 mm



CAPABILITIES

Fuel tank.....	405 L
Engine oil with filter.....	16.4 L
Engine oil without filter.....	15.6 L
Engine cooling system.....	30.2 L
Hydraulic reservoir.....	210 L
Final reducer – per side.....	25 L
Lower rollers - each.....	0.275 L
Guide wheels – each.....	0.225 L
Upper rollers – each.....	0.334 L



TRACK

Track adjustment.....Hydraulic
Chassis.....Oscillating Suspension with equalizer beam
and pivot shaft

Track link pitch

SALT track.....	203 mm
ALT track.....	203 mm
Track shoe height.....	71.5 mm

* Measure using standard XLT track.

Pin Diameter	44 mm
Bushing diameter	
SALT track.....	72 mm
ALT track.....	93 mm
Track shoes per side	
SALT/ALT track	45 XLT
Lower rollers per side	8
Top rollers per side.....	2
Track on the ground	
Shoe area	
610 mm	39.979 cm ² XLT



RIPPER

Max penetration.....	570 mm
Width.....	1.953 mm
Cutting width	1.889 mm
Free span	592 mm
Max. number of teeth.....	3
Teeth spacing w/3 teeth.....	944 mm
Double acting hydraulic cylinder	
Diameter.....	155 mm
Stroke	596 mm
Rod.....	69 mm



BLADE

Blade pitch – adjustable	55° +/- 5°
Lifting speed – per second	483 mm
Cutting edge.....	Reversible and replaceable
Width	200 mm
Thickness	20 mm

OPERATING WEIGHTS

Operating weights include cabin, full fuel and hydraulic tanks, 77 kg operator, SALT track, front tow hook, rear tow hook, track guides, reverse alarm, horn, lights, track shoe, chassis “C” and blade width as noted.

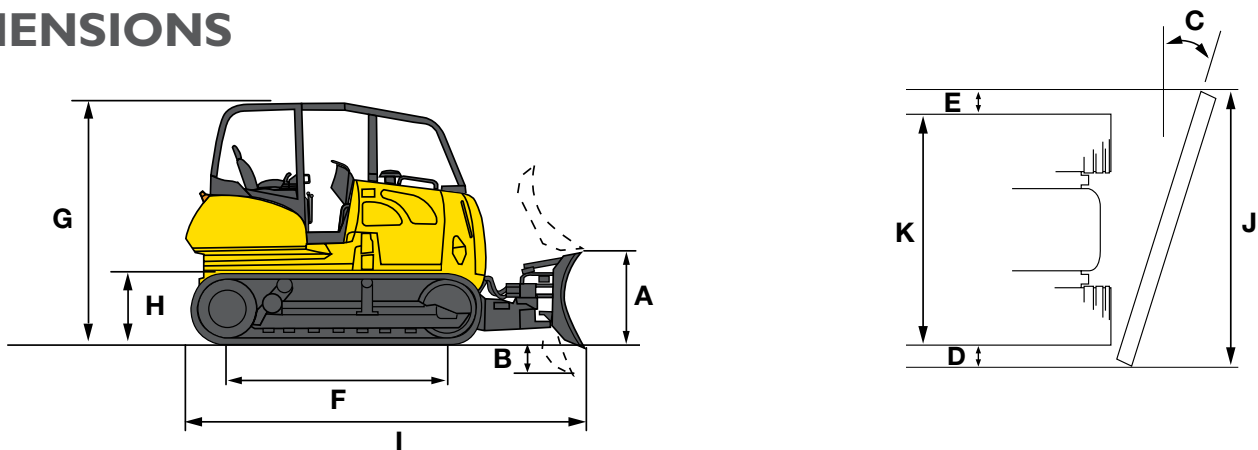
OPERATING WEIGHT	Weight (kg)	ADDITIONAL WEIGHTS	Weight (kg)
Extra Long Undercarriage (XLT)	20.599 (PAT)	Drawbar	66
	20.871 (Semi-U)	Ripper (3 teeth)	1.889

TRACK AND SHOE OPTIONS

XLT (EXTRA LONG TRACK)	
24" (610 mm)	SALT closed grips (standard track)

D180C

DIMENSIONS



Line drawings are for illustrative purposes only and may not be an exact representation of equipment.

BLADE DIMENSIONS		SEMI-U BULLDOZER	RETA PAT
Blade capacity SAE J1265	m ³	5.58	4.82
Undercarriage available		XLT	XLT
J Blade width	mm	3.426	3.606
Blade width in transport position	mm	3.426	3.287
A Blade height	mm	1.420	1.310
Max. tilt.	mm	+/- 41°	+/- 45°
Max pitch.	°	+/- 5	+/- 5
C Max. angle.	°	-	+/- 28
B Digging depth	mm	583	590
Blade elevation above the ground	mm	1.244	1.130
D Output range	mm	438	582
E Cutting range	mm	438	154

MACHINE MODEL		XLT (EXTRA LONG TRACKS)
TRACKS		
Gauges	m	1.940 mm
Max. shoe width	mm	610 mm
F Track on the ground	m	3.277 mm
Track area on the ground	m ²	4.00 m ²
Pressure on the ground	kg/cm ²	0.52 kg/cm ² *
DIMENSIONS		
G Height to top of cab	mm	3.103 mm
H Free span	mm	325 mm
I Length		
- Straight blade with drawbar	mm	5,902 mm PAT 5,387 mm Semi-U
- <i>Straight blade with ripper</i>	mm	7,383 mm PAT 6,869 mm Semi-U
Width		
Width	mm	3,606 mm PAT 3,426 mm Semi-U
J Angled blade	mm	3,287 mm PAT
K On the track	mm	2,550 mm with 610 mm shoe

*With 610 mm track and PAT blade.

NOTE: The free span and height dimensions in general are with the claws fully buried. Add 52.5 mm if the unit is on firm ground.

STANDARD EQUIPMENT

- Tier 3 certified FPT electronic engine
- Reversible fan with manual and automatic activation
- *Intercooler* for intake air cooling
- Fuel filter
- Cyclonic pre-filter
- Intake filter with 2 radial elements
- 120V alternator
- 2 batteries 12V
- Automatic hydrostatic transmission
- 7 speed modes reverse relative to forward
- 3 severity modes for reversal
- 3 steering sensitivity modes
- 3 blade sensitivity modes
- 4 maximum speed modes
- Triple final reduction
- Pedal with decelerator or brake function
- Spring-applied automatic parking brake
- Nitrogen accumulator for blade lowering
- Hydraulic adjustment of tracks
- 24" (610 mm) sealed and lubricated tracks
- Tracks, rollers, and guide wheel permanently lubricated
- Blades with pitch angle adjustment via screw or tie rod
- PAT blade with 6 *joystick*-activated movements
- Bulldozer blade with 4 *joystick*-activated movements
- SHAKE function for PAT blade
- Displacement *joystick* with proportional control
- Enclosed cabin with heating, A/C, demister, windshield wiper and lights
- Two-point seat belt with tensioner
- Internal rear view mirror
- Reverse alarm
- Horn
- Work lights: 2 front and 1 rear
- Mechanical general switch
- Partial protection of lower rollers
- Ecological drain for fuel and hydraulic tank

OPTIONALS

- Rear tow hook
- Rear drawbar
- Arrangement for rear winch
- Full protection of lower rollers
- Additional work lights: 2 front and 1 rear
- FleetForce Telemetry System
- FleetGrade System (automatic implement control)
- Radio

FLEETSYSTEMS

NEW HOLLAND FLEETFORCE MAXIMIZE YOUR FLEET PRODUCTIVITY WITH EFFECTIVE PLANNING AND INCREASE YOUR PROFITABILITY.

FleetForce is New Holland's telemetry system that collects machine performance and location information and makes it available in an easy-to-use format. With your dealership's expert support, you'll enjoy greater efficiency, lower operating costs and greater profitability.

FleetForce can be used on any New Holland or non-New Holland machine, service vehicles and any vehicle in your fleet.



MAXIMIZING YOUR FLEET PRODUCTIVITY:

Provides performance and essential information about your machine. With it, you:

- Identify which machines are not being used and which are being heavily used.
- Compare the performance or trend of machines in terms of fuel consumption over journeys.
- Evaluate machine notifications to optimize the use of your equipment.
- Configure the system to receive machine operating logs, scheduled maintenance alerts, and safety alerts via email.

EFFECTIVE PLANNING:

- Fleet control from machine performance trends and operator efficiency.
- Pre-programmed to monitor up to 40 parameters – some of which can be customized – FleetForce can be configured to provide a simpler or more comprehensive analysis, according to your needs.

HIGHER PROFITABILITY:

- Your dealership can help you increase the productivity of your fleet by analyzing machine information, such as idle time data, machines that need maintenance and parts, and everything else to maximize service efficiency.

PLAN FEATURES	BASIC	ADVANCED	SATELLITE
FLEET MANAGEMENT			
Locate and “ping” (test) the machines for project management.	✓	✓	✓
Machine hours report.	✓	✓	✓
PLANNED MAINTENANCE			
Planning and preparing maintenance intervals.	✓	✓	✓
SECURITY			
Electronic Geographic Fence (GeoFence): notifications about unplanned movements in real time.	✓	✓	✓
Curfew.	✓	✓	✓
USAGE ANALYSIS AND REPORT			
Reports on idle time, engine running, displacement time and machine usage.	✓	✓	✓
PERFORMANCE ANALYSIS			
Uploading engine data to compare machines and operations to identify operating trends.	-	✓	✓
FUEL INFORMATION AND REPORTS			
Consumption data to track the usage of a machine or the entire fleet.	-	✓	✓
MECHANICAL OPERATING PARAMETERS			
Following up the operating characteristics of the machine: temperature, pressures, alerts for out-of-range parameters and CAN-bus parameters for diagnostics and troubleshooting.	-	✓	✓

SUBSCRIPTION PACKAGE

Three subscription packages are available, depending on the level of detail in the information:

- The Basic Subscription uses essential inputs from ignition key contact, motion detection and GPS tracking to secure a range of information and reports.
- The Advanced Subscription adds custom control data and unique information not found in other telemetry systems via our CAN-bus data.
- The Satellite Connection Subscription can be added to the Basic and/or Advanced subscription. The data update of your equipment with the Satellite connection can be every 4 hours and complete reports every 24 hours. The Basic and Advanced packages offer a subscription of up to five years and the Satellite Connection Subscription of one or two years, and you can purchase extensions for all from your dealership through the Parts Department.

Learn more at your dealership.

suportefleetforce@newholland.com
www.newholland.com



AFTER-SALES SERVICE FROM THE NEW HOLLAND AUTHORIZED NETWORK HIGH PERFORMANCE AND PRODUCTIVITY WARRANTY.

The **New Holland** Authorized Network offers specialized services, professionals rigorously trained by the factory and genuine parts with a guarantee of quality and provenance, besides full support for the purchase of your equipment and easy financing.

O **New Holland** After-Sales service is at your disposal to guide you and provide the best options for contracting authorized services and purchasing parts. With it, you guarantee the high performance and the best throughput of your machine, with complete safety and at the lowest cost-benefit ratio.

For full access to the productivity and high technology that only **New Holland** offers, rely on the **New Holland** Authorized After Sales Network.



AT YOUR DEALERSHIP:

Dimensions, weights, and capacities shown in this brochure, as well as any conversions used, are always approximate and are subject to variations considered normal within manufacturing tolerances. It is New Holland's policy to continually improve its products, and the company reserves the right to modify specifications and materials or introduce improvements at any time without prior notice or obligation of any kind. The illustrations do not necessarily show the product in *standard* condition.

IONHCE1022

COMUNICAÇÕES AMÉRICA LATINA ©

Factory:

Contagem – Minas Gerais – Brazil
Av. General David Sarnoff, 2.237
Inconfidentes – Zip Code 32210-900
Telephone: 31 2104-3111



www.newholland.com.br

A Brand of CNH Industrial

